



TrueChrome AF

HDMI Autofocus Color Microscope Camera

Built-in mouse control for autofocus and image measurement operations

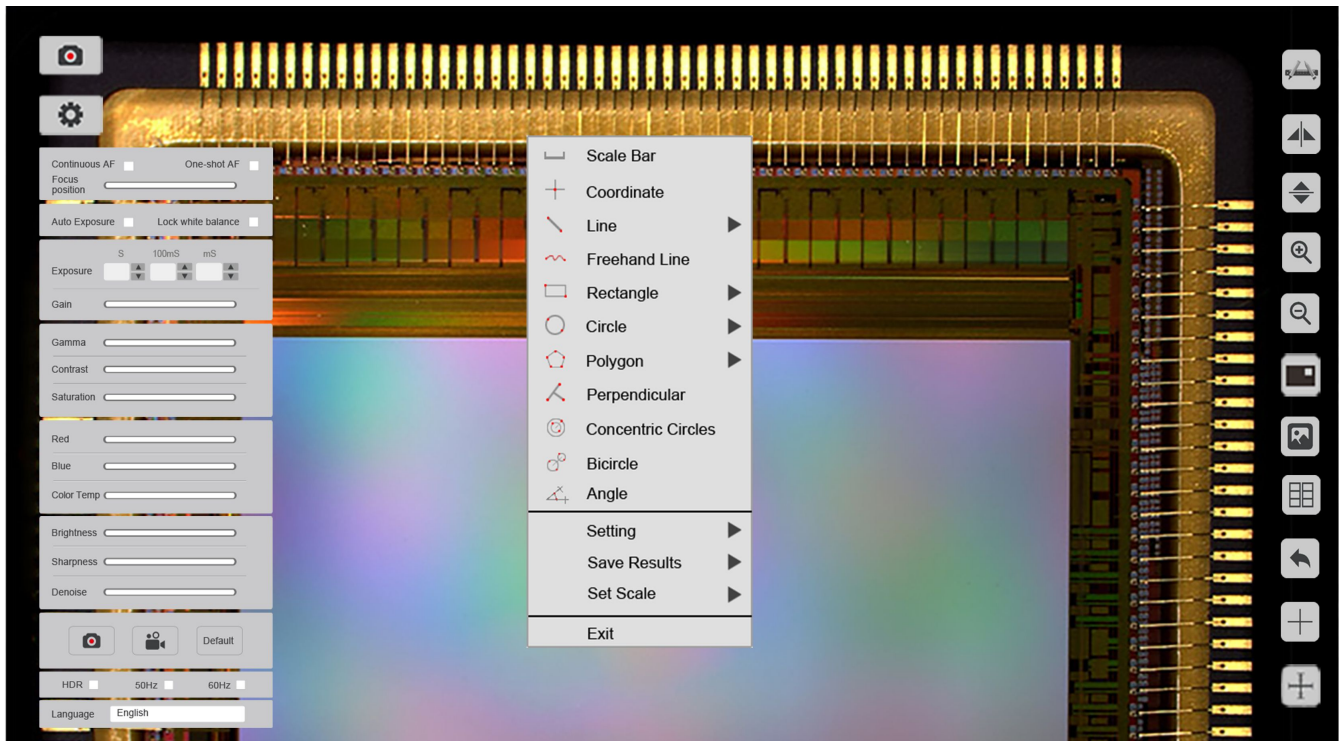
Compatible with Mosaic V2.1 Computational Imaging Software

TUCSEN

ISO9001 CE  RoHS

www.tucsen.com

Built-in mouse control for autofocus and image measurement operations



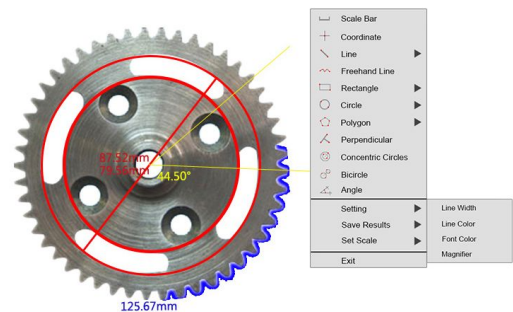
○ An unprecedented high-speed focusing experience

TrueChrome AF offers both continuous and single-shot autofocus modes. It also supports mouse wheel control for fine-tuning. Data transfer up to 60 frames per second enables users to get clear images with ease.



○ Professional digital image measurement system

TrueChrome AF provides extremely powerful measurement functionalities including, freehand line, rectangle, polygon, circle, bicircle, angle, point-line distance and much more. Three different length units of millimeter, centimeter, and micrometer are provided to meet various measurement requirements in different applications.

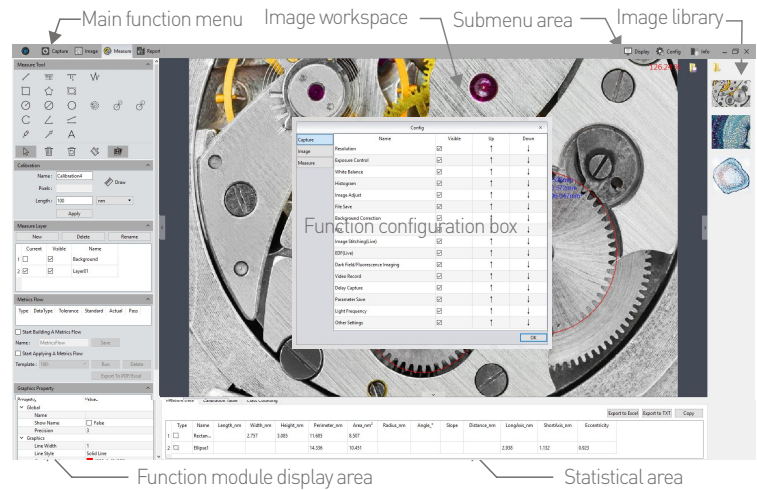


Revolutionary PC computing imaging software Mosaic V2.1

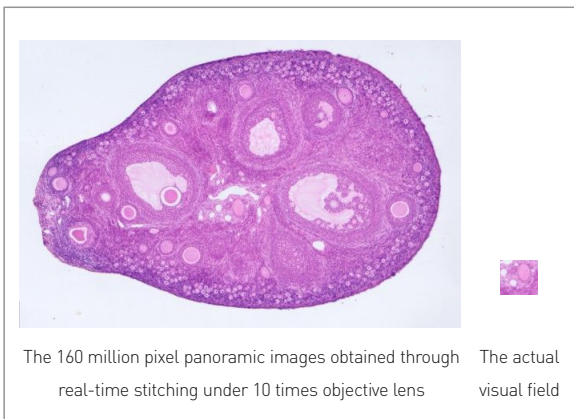
Fast, efficient and worry-free is the core design concept of Mosaic V2.1 software. It adopts a new image "shooting-processing-measurement-reporting" function, modular design, and integrates various intelligent image processing algorithms from Tucsen. It is dedicated to providing users with more simple operation modes and improve work efficiency in all circumstances.

○ Custom function module

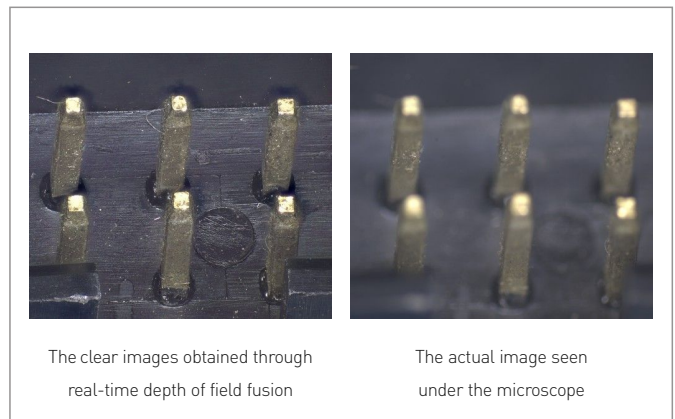
- ① Autofocus and fine-tuning operations
- ② Intelligent image capture and processing
- ③ Efficient measurement and attribute editing
- ④ Reports are automatically created and modified



○ Real-time image stitching



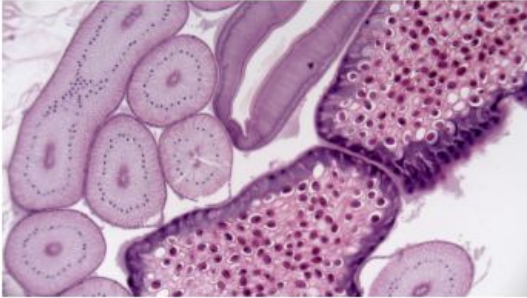
○ Real-time depth-of-field fusion



It can generate large-sized mosaic images in a few seconds while moving the stage, which is light, smooth and worry-free!

Turning the focus ring to capture different depth of field points while generating clear depth of field images, fast, accurate and efficient.

The continuation of the TrueChrome

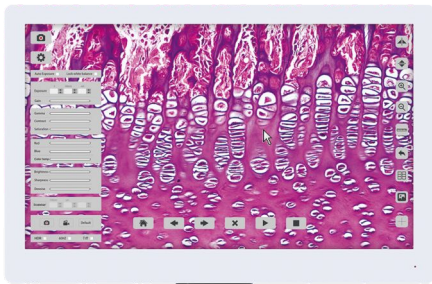
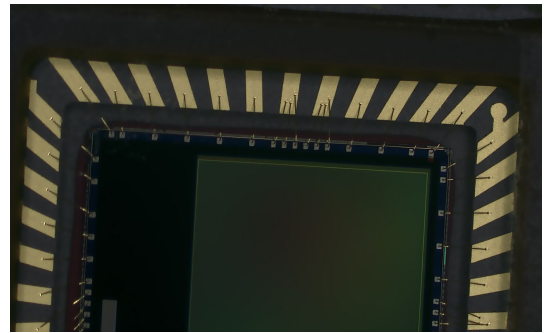


- Perfect color reproduction

TUCSEN's color processing is capable of a new level of precision, matches the monitor image to the eyepiece view, produces extremely-high color definition.

- Fastest USB2.0 camera with 30 fps

With 30fps data transfer at an uncompressed resolution of 1920X1080, TrueChrome AF sets a precedent. Make it one of the fastest USB2.0 camera in the world.



- Tailored 1080P HD screen

In order to let users better feel the excellent quality of the Tucsen cameras, we specially customized a 1080P high definition display screen - Retina Screen, which perfectly matches the performance of TrueChrome camera.

Note: Retina Screen is an optional accessory that users can choose to use.

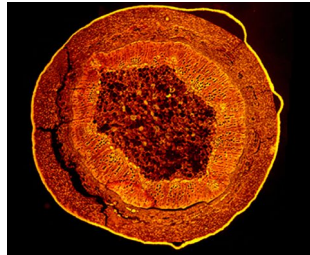
Copyright >>

Tucsen is an authorized dopter of the international organization HDMI associate. We are the legal supplier of HDMI scientific cameras which represents the best stability and compatibility of Tucsen HDMI scientific cameras.



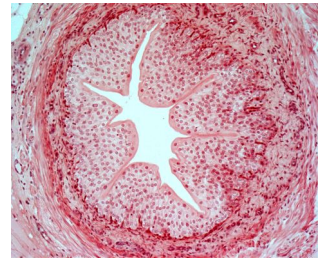
Sample >> Applications

Fluorescence microscope



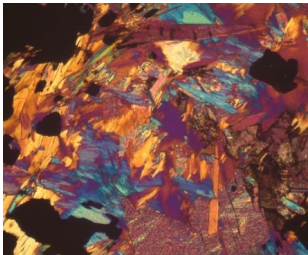
Plant stem section, 10X

Biological microscope



Blood vessel, 20X

Polarizing microscope



Rock section, 20X

Metallographic microscope



PCB board, 5X

Stereoscopic microscope



Screw hole, 4.5X

Camera specification

| | | | |
|--------------------|--|--------------------|------------------|
| Sensor | CMOS | Sensor Size | 1/2.8" |
| Preview Resolution | 2MP, 1920x1080 | Capture Resolution | 6MP, 3264x1836 |
| Frame Rate | 60fps @HDMI 35fps @USB2.0 | Capture | SD card(16G) |
| Video Recording | 30fps @PC 30fps @SD | Exposure Mode | Auto/Manual |
| Exposure Time | 2ms~10s | White Balance | Auto/Manual |
| Setting | White Balance, Exposure Time, Noise, Re Junction, Gain, Gamma, WDR | | |
| Built-in Software | Cloud 1.0 Ver | PC Software | Mosaic V2 |
| Data Interface | USB2.0, SD, HDMI | Optical Port | Standard C-Mount |
| Optical Interface | Windows 7 / 8 / 10 (32 / 64bit), Mac | | |
| Camera Weight | 460g | Camera Size | 90.7x78x70.8(mm) |

Retina Screen Features

| | | | |
|-------------|----------------------|-----------------------|------------|
| Resolution | 1080P(1920x1080) | Display Type | IPS-Pro |
| Screen Size | 11.6" | Aspect Ratio | 16:09 |
| Brightness | 320cd/m2 | Static Contrast Ratio | 1000:01:00 |
| HDMI Port | 1 | Power Supply Type | 12V, 2A |
| Size | 282.0x180.5x15.3(mm) | Weight | 600(g) |

Tucsen Photonics Co., Ltd.

Add: 5# Wanwushe Smart Industrial Park , No.2 Yangqi Branch Rd, Gaishan Town, Cangshan Area, Fuzhou, Fujian, PRC, China.

Tel: +86-591-28055080

Web: www.tucsen.com

E-mail: support@tucsen.com

PC software features

| |
|--|
| Modular function configuration |
| Intelligent 12-bit ISP color reproduction |
| Real-time depth of field fusion |
| Real-time image stitching |
| Real-time fluorescence image synthesis and editing |
| HDR image synthesis |
| Micro-imaging-based intelligent automatic exposure |
| Intelligent flat field correction based on dynamic calculation |
| Smart measurement workflow |
| Implements multiple iterations of workflow execution |
| Supports single shot, delayed camera |
| Automatic video and delay video generation |
| Output format selection |
| User parameter group save and load |
| Dynamic \ static measurement |
| Layered measurement |
| Customize measuring gauges, layers, precision |
| Customize image naming, style, save location |
| Implements drawing: points, lines, rectangles, polygons, circles, arcs, angles |
| Data export as TXT or Excel |
| Report generation and printing |

